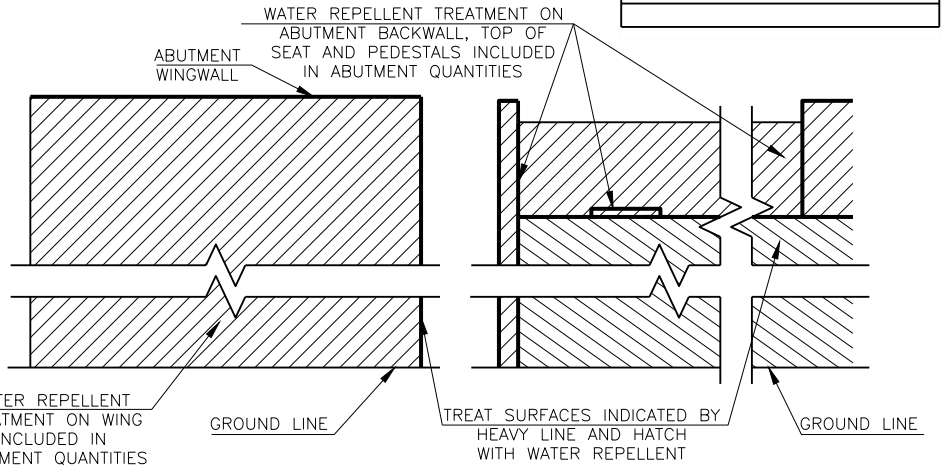
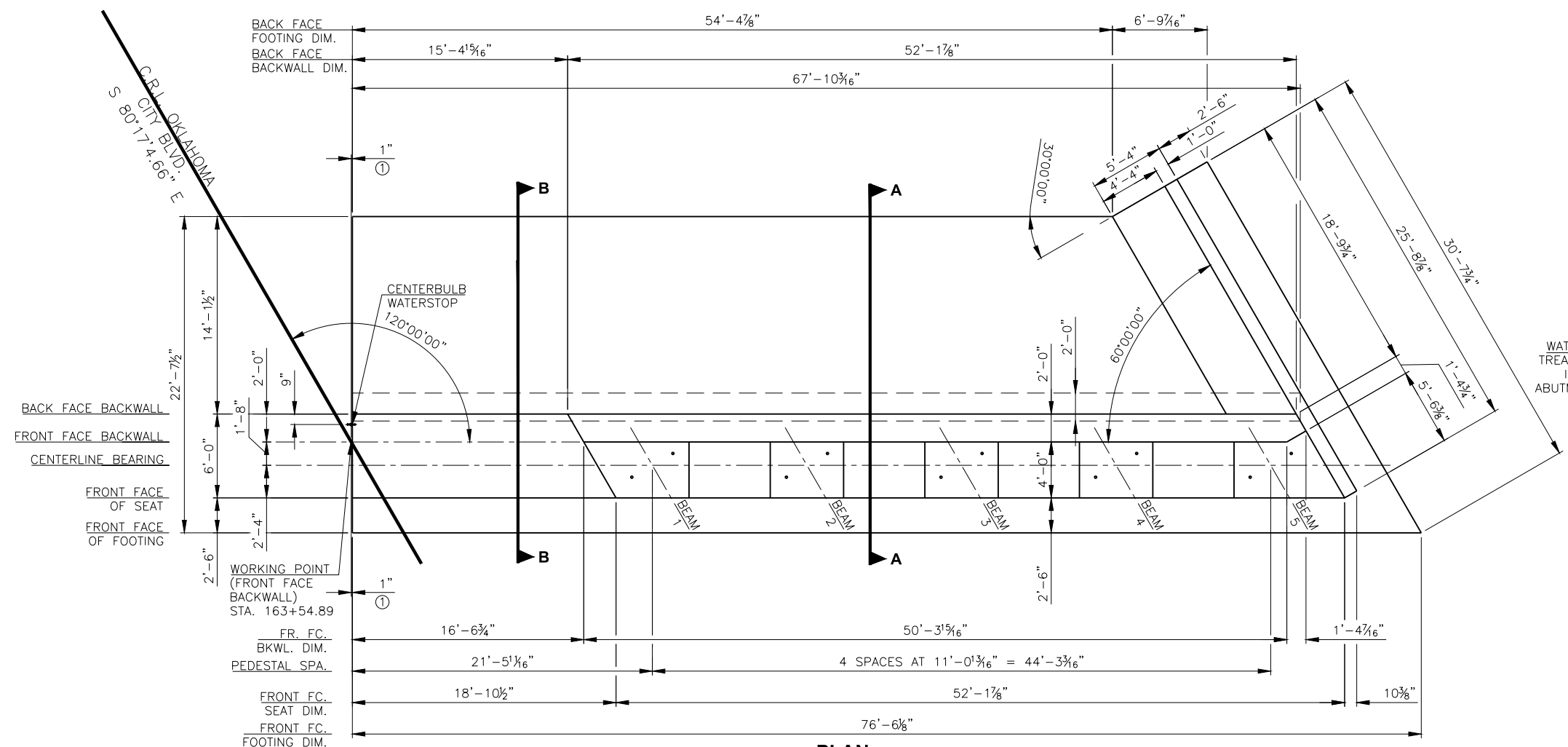


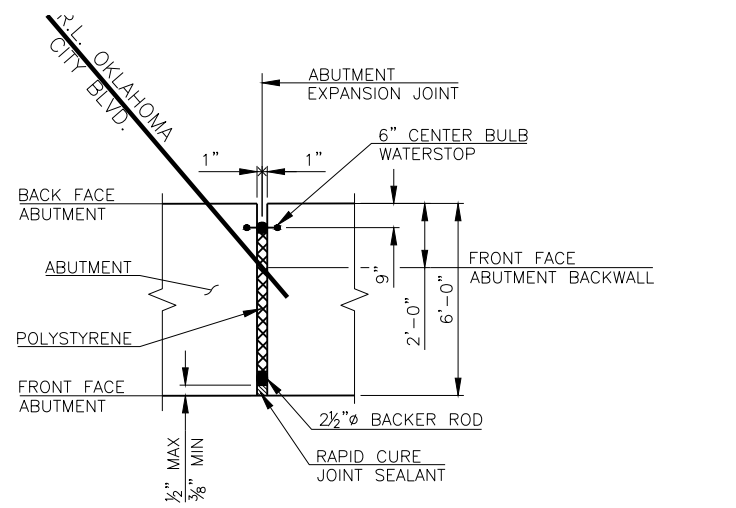
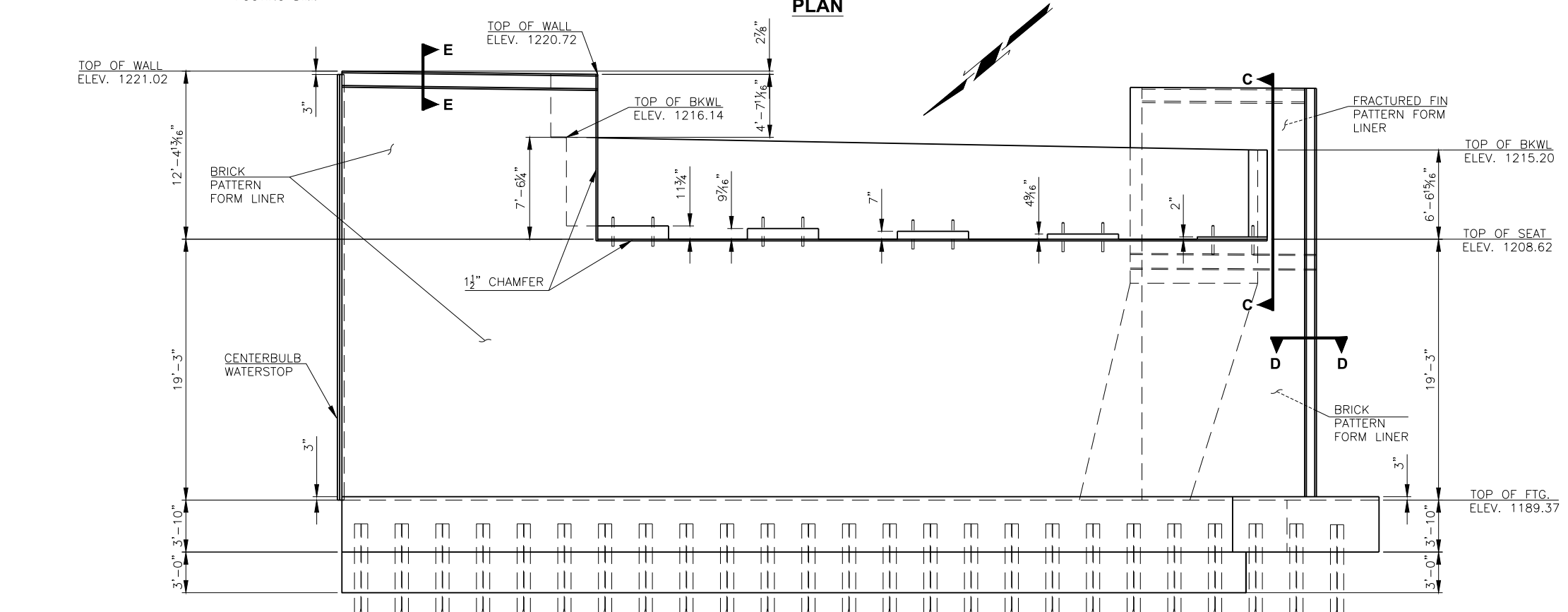
DESCRIPTION	REVISIONS	DATE



WING ELEVATION SEAT ELEVATION

ABUTMENT WATER REPELLENT TREATMENT DETAILS

- ① 2" NOMINAL JOINT BETWEEN ADJACENT ABUTMENTS. SEE THIS SHEET FOR DETAILS.
- NOTES:
ALL COST TO PROVIDE AND INSTALL CENTERBULB WATERSTOP INCLUDED IN OTHER ITEMS OF WORK.
- FOR SECTIONS A-A AND B-B, SEE SHEET 90.
- FOR FORM LINER DETAILS AND SPECIAL CONCRETE FINISH NOTES, SEE SHEETS 137-139.



ABUTMENT JOINT DETAIL

DESIGN	T.A.C.	OKLAHOMA CITY BLVD. OVER CLASSEN BLVD.	OKLAHOMA COUNTY BRIDGE A
DRAWN	R.A.P.		
CHECKED	T.A.C.		
APPROV.	T.A.C.		
SQUAD	CEC		

ABUTMENT NO. 2 - PLAN AND ELEVATION

JOB PIECE NO. 17428(88) SHEET NO. 87